



Co-funded by the  
Erasmus+ Programme  
of the European Union



# Moodle Learning Management System

The course is developed under Erasmus+ Program Key Action 2:  
Cooperation for innovation and the exchange of good practices [Knowledge Alliance](#)

**ICT IN TEXTILE AND CLOTHING HIGHER EDUCATION AND BUSINESS**

Project Nr. 612248-EPP-1-2019-1-BG-EPPKA2-KA

*The information and views set out in this publication are those of the authors and do not necessarily reflect the official opinion of the European Union. Neither the European Union institutions and bodies nor any person acting on their behalf may be held responsible for the use which may be made of the information contained therein.*



Co-funded by the  
Erasmus+ Programme  
of the European Union



# Content


- About Moodle
- Moodle components and sub-components
- Moodle users and roles
- Moodle statistics

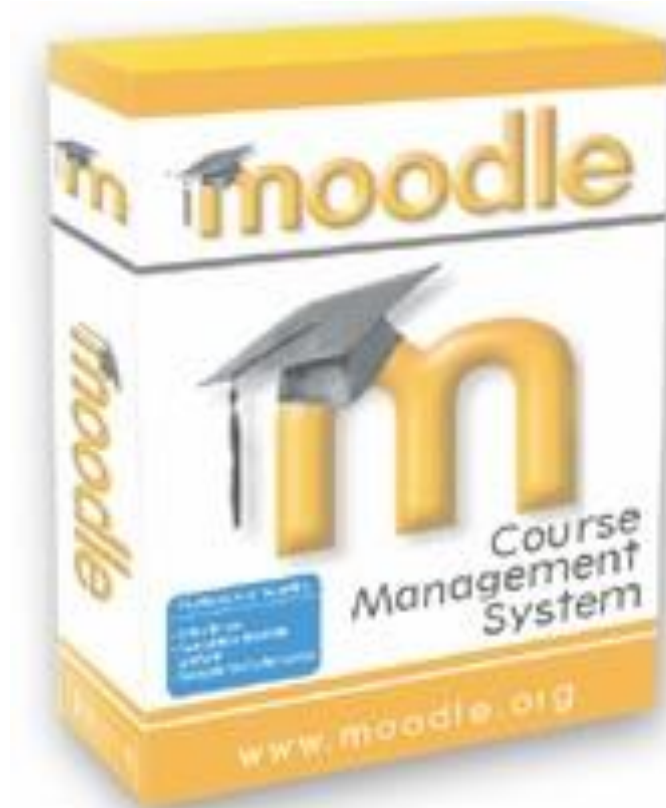


Co-funded by the  
Erasmus+ Programme  
of the European Union

ICT-T~~E~~X

# MOODLE – the Abbreviation

 Modular  
O bject  
O riented  
D ynamic  
L earning  
E nvironment





Co-funded by the  
Erasmus+ Programme  
of the European Union



# MOODLE – Brief History



- Designed and created by **Martin Dougiamas**, Australia
- Initially it is a part of the Martin's MSc. Thesis
- First version: **August 2002**



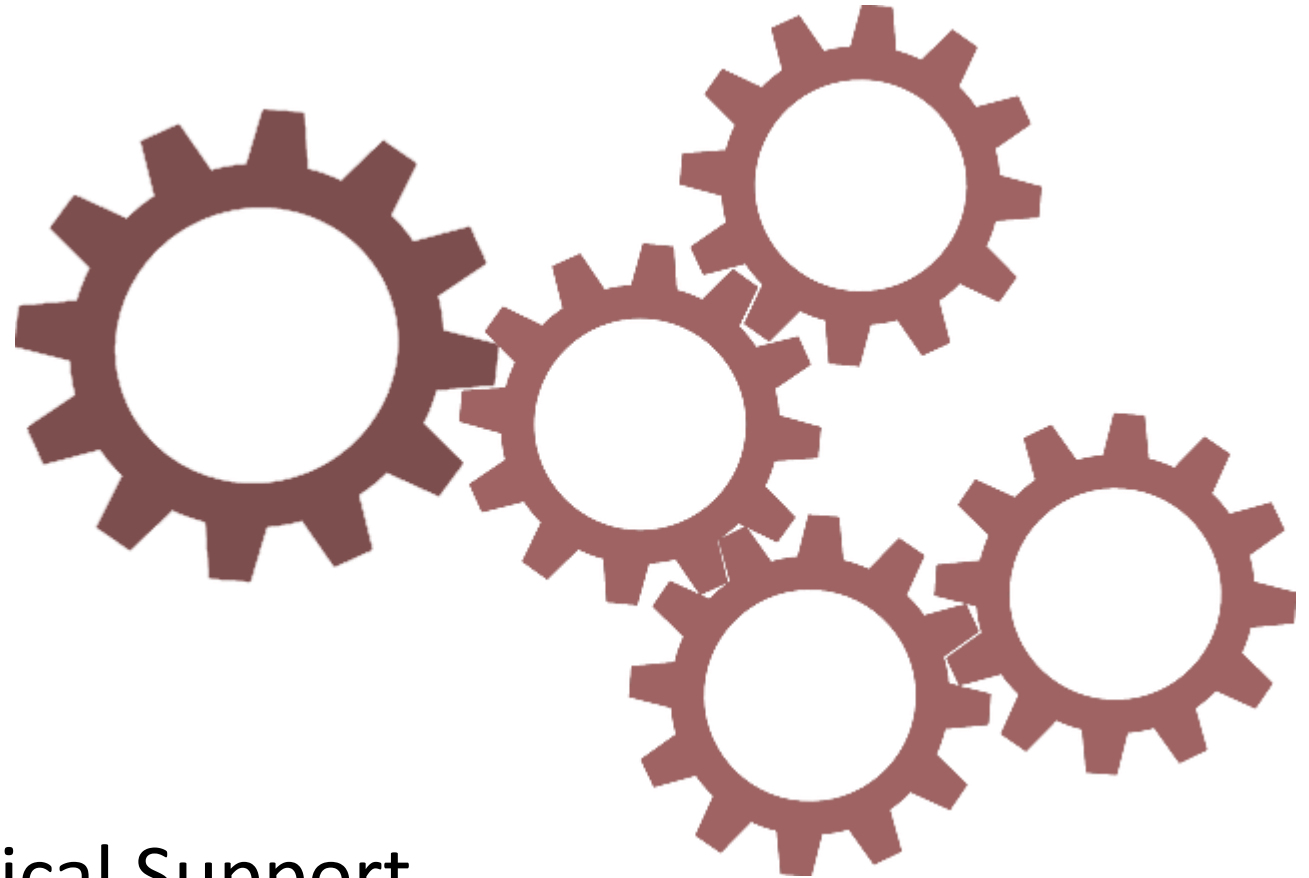
# MOODLE – General Characteristics

- Open Source Software
- Free Dissemination
- A Lightweight and Simplified Interface
- Opportunities to Contain and Support a Big Number of Study Courses
- Based on sound pedagogical principles (Constructivism)
- Easy Installation
- Installation on Linux, Windows, or Mac servers



# Components

- Organisation
- Communication
- Resources
- Group work
- Assessment
- Feedback
- Administrative & Technical Support
- Others





Co-funded by the  
Erasmus+ Programme  
of the European Union

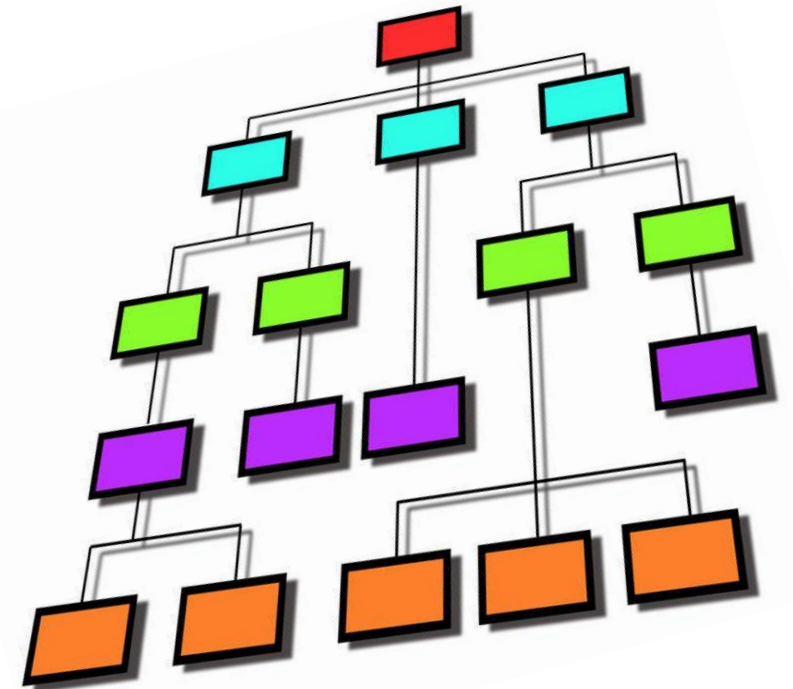


# Components and Sub-components



# Organisation

- Announcements (Teachers' announcements)
- Course information
- Time-table (by weeks)
- Creation of Assignments







Co-funded by the  
Erasmus+ Programme  
of the European Union

ICT-TX

# Communications

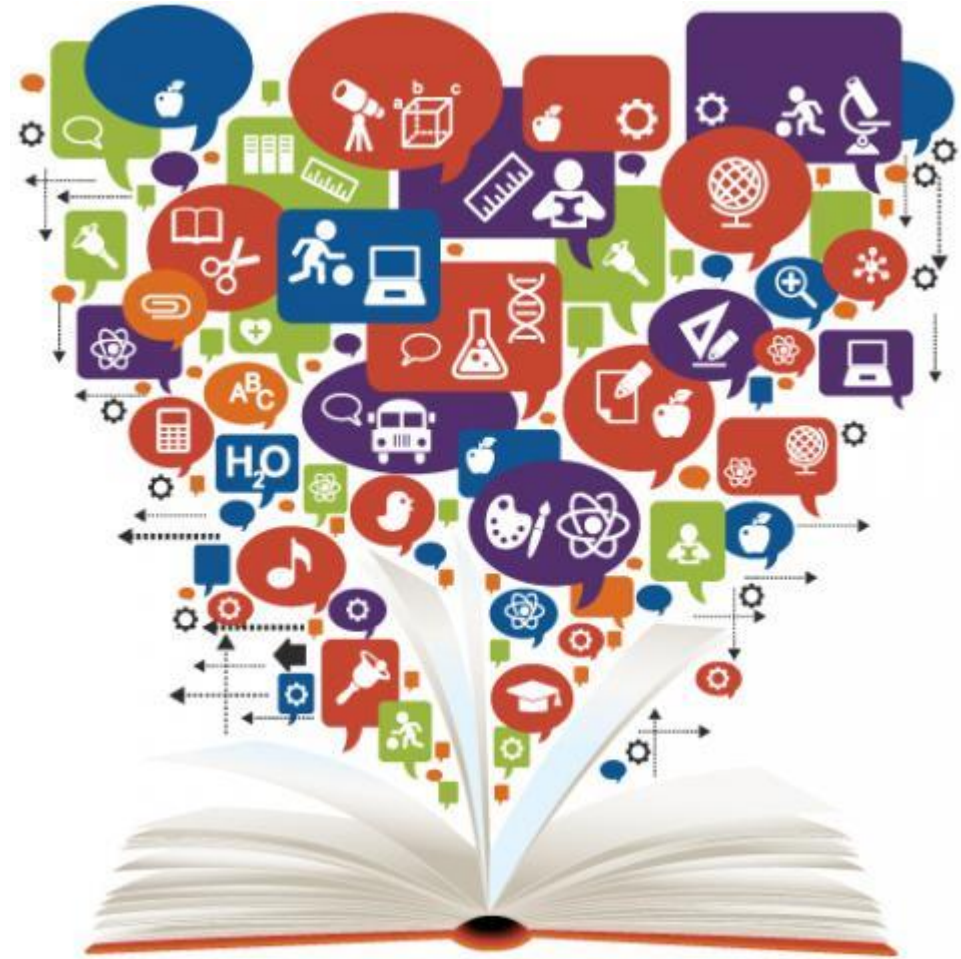
- Participants / e-mails
- Discussions
- Questions & Answers
- Chat





# Resources

- Presentations
- Reading materials
- Multimedia materials
- Glossary / Reference book
- Software for the course needs
- Hyperlinks/URLs
- Labels





Co-funded by the  
Erasmus+ Programme  
of the European Union

ICT-TEX

# Group/Team work

- Workspace
- (Group) presentations
- Voting
- By creating groups in the corresponding course





# Assessment

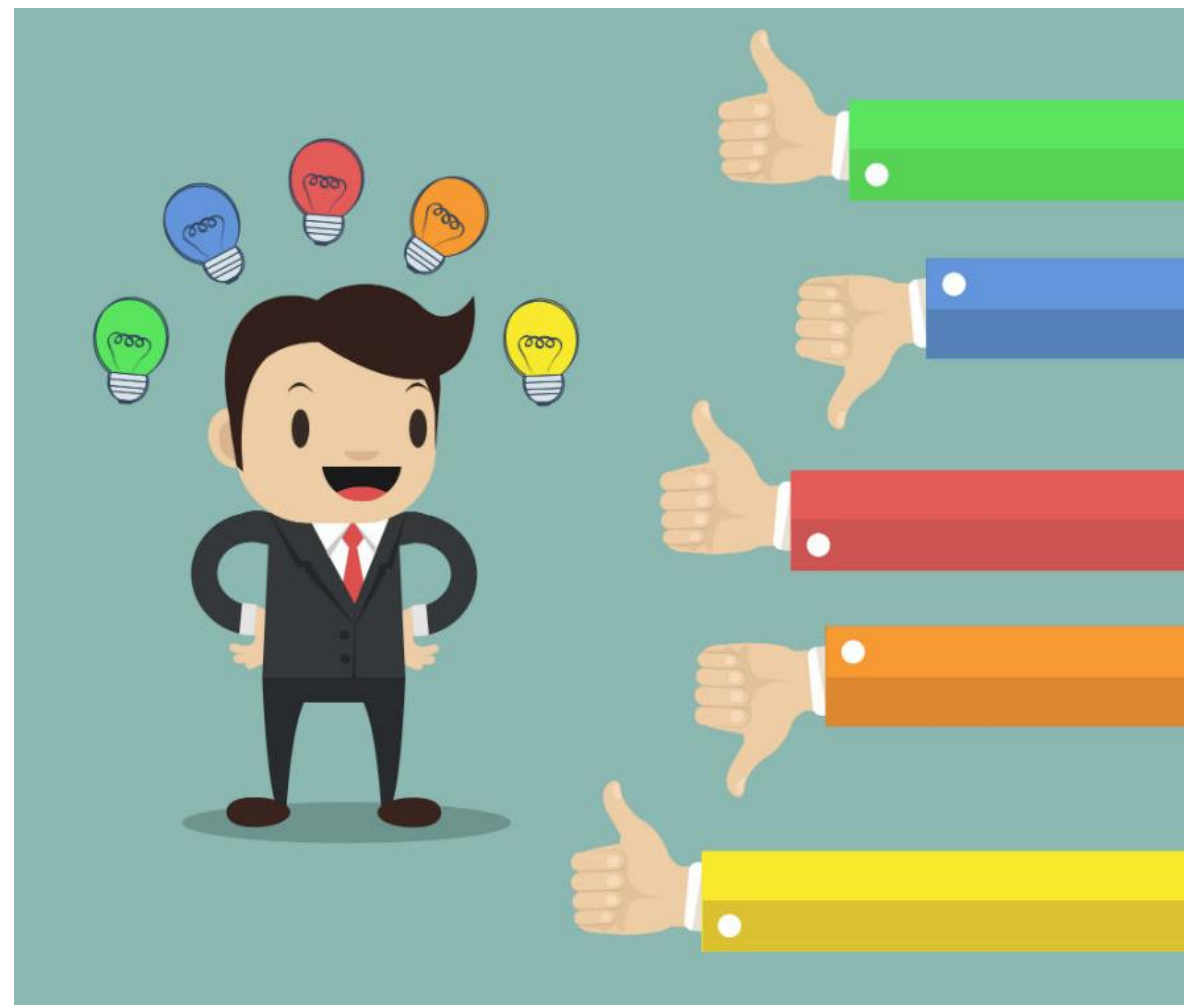
- Online quizzes
- Written assignments
- Case studies
- Assessment of group / team work





# Feedback

- “Choice” activity
- “Feedback” activity
- “Survey” activity
- Messages
- Forum(s)
- Students’ results
- Comments
- Grades
- Access to other students’ works
- Exemplary works





Co-funded by the  
Erasmus+ Programme  
of the European Union



# MOODLE - Users and Roles



Co-funded by the  
Erasmus+ Programme  
of the European Union



## “Standard” roles

- Manager
- Course creator
- Teacher
- Non-editing teacher
- Student
- Guest

# Manager

- A user with the highest privileges and rights in a Moodle platform
- Holds the rights to create all other accounts (user profiles) in Moodle
- Holds all the rights to manage and work with the system and all its components
- Has also all rights of the other subordinated user roles:
  - Course creator
  - Teacher
  - Non-editing teacher
  - Student
  - All other 'non-basic' roles (Guest, Translator, Wiki-editor, ...)







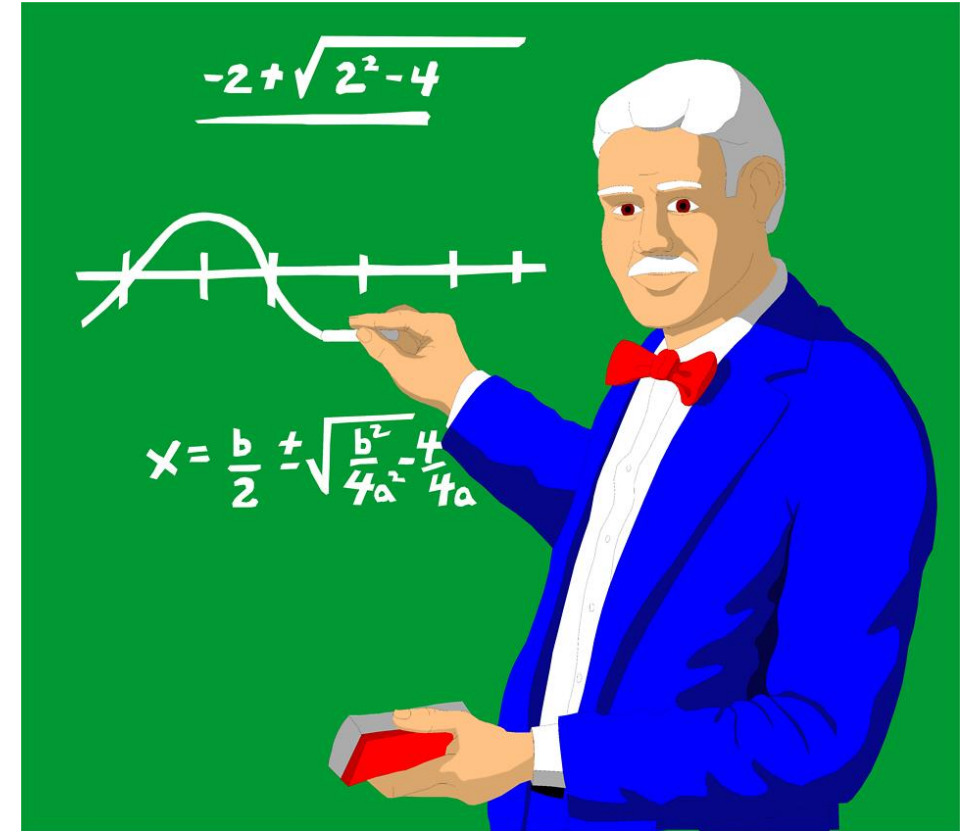
# Course creator

- Can:
  - create “empty” courses in the platform where s/he has rights to do so
  - remove created courses from the platform
    - only the courses s/he created
  - fill-in and edit a created course by them



# Teacher

- Can:
  - enroll and remove students from the course
  - develop the course in the platform
  - upload course materials in the course
  - create activities in the course
  - assess and grade assignments
- Has rights to work with many other opportunities in the course





Co-funded by the  
Erasmus+ Programme  
of the European Union



# Non-editing teacher

- Teacher-assistant
  - Can view and assess assignments
  - Can administer quizzes and other activities



# Student

- Can enter courses where s/he is enrolled and to use them freely
- Can:
  - self-enroll in a course if allowed to do so
  - un-enroll from a course
  - read materials and view resources
  - perform assignments
  - take quizzes
  - respond to ‘survey’ and ‘feedback’ activities
  - participate in writing wikis
  - use provided external resources and URLs





# Guest

- If an access is given to a Guest role in a course, the Guest can enter and view the course
- Can download resources from the visited course
- Can view activities
- Cannot perform activities
- Cannot view results from activities





Co-funded by the  
Erasmus+ Programme  
of the European Union



# MOODLE Statistics



# Moodle in Numbers (15.03.2021)

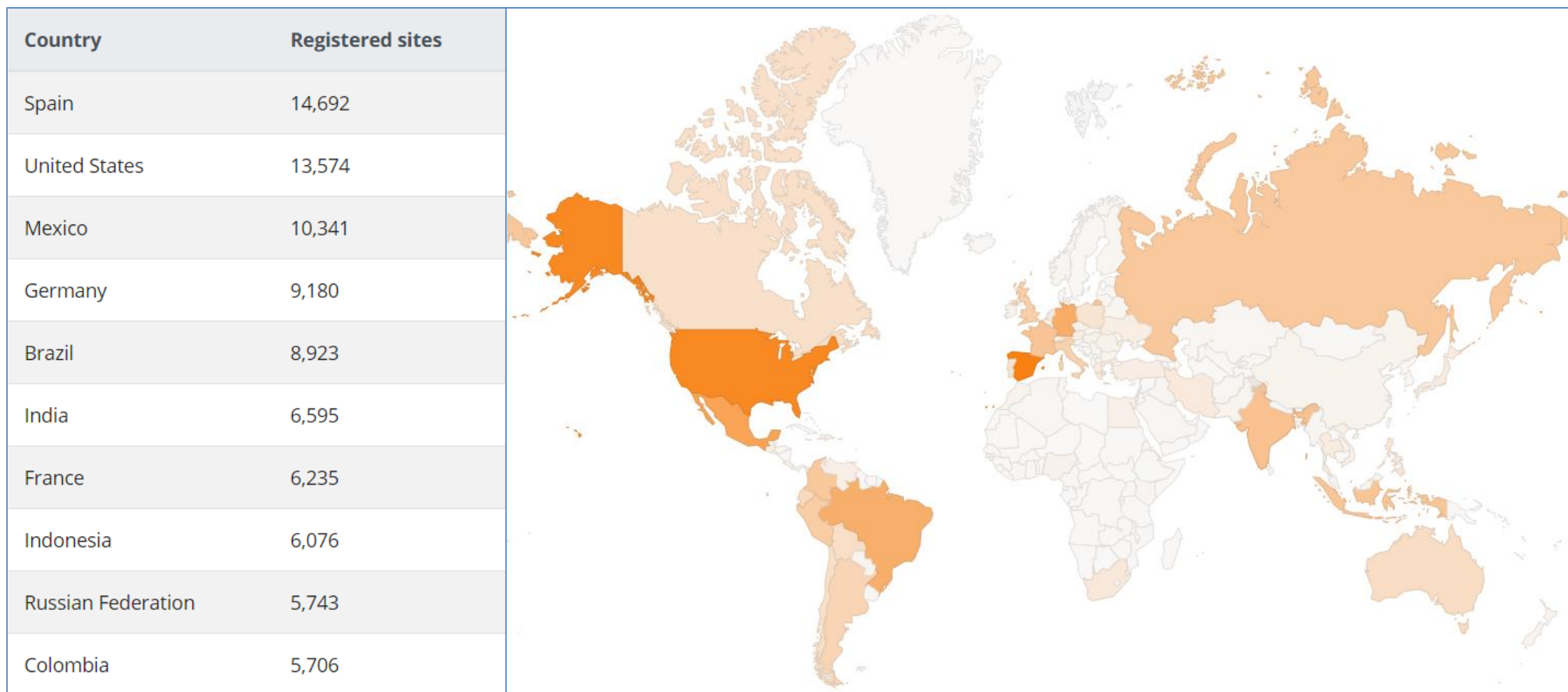
- 179 000 registered sites
- 242 countries
- 35 000 000+ courses
- 259 000 000+ users
- 1 473 000 000+ enrolments
- 285 000 000+ resources
- 4 070 000 000 + quiz questions



Source: <https://moodle.net/stats>



# Top 10 from 242 countries by registrations (March'21)







# Moodle in some European universities

- University of Cambridge - <https://www.student-systems.admin.cam.ac.uk/moodle>
- University of Essex - <https://moodle.essex.ac.uk/>
- University of Nottingham -  
<https://www.nottingham.ac.uk/student-services/services/moodle.aspx>
- University of Luxembourg -  
[https://www.en.uni.lu/students/useful information from a to z/moodle](https://www.en.uni.lu/students/useful-information-from-a-to-z/moodle)
- University of Portsmouth -  
[http://www2.port.ac.uk/departments/services/dcqe/Enhancingyourteachingwith  
technology/Technologywecanadviseon/moodle/](http://www2.port.ac.uk/departments/services/dcqe/Enhancingyourteachingwithtechnology/Technologywecanadviseon/moodle/)
- University of Kent - <https://www.kent.ac.uk/elearning/moodle/>
- Dublin City University - <https://www.dcu.ie/students/moodle>

# CONTACTS

## **Coordinator:**

Technical University of Sofia  
Department of Textile Engineering

**Web-site:** [ICT-TEX.eu](http://ICT-TEX.eu)



Co-funded by the  
Erasmus+ Programme  
of the European Union

KNOWLEDGE ALLIANCE

**ICT-TEX**

ICT IN TEXTILE AND CLOTHING  
HIGHER EDUCATION AND BUSINESS

*The information and views set out in this publication are those of the authors and do not necessarily reflect the official opinion of the European Union. Neither the European Union institutions and bodies nor any person acting on their behalf may be held responsible for the use which may be made of the information contained therein.*