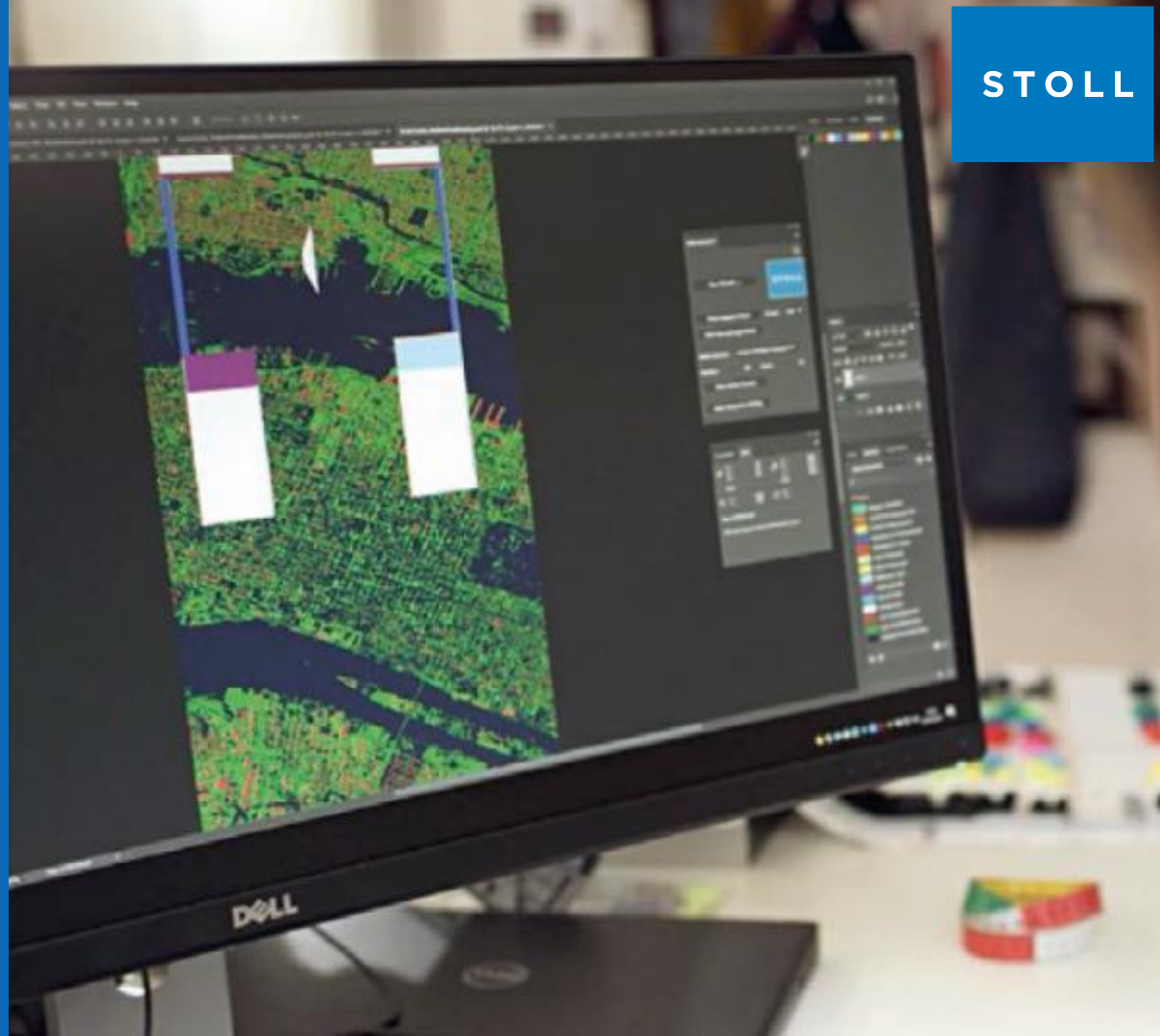






STOLL-artwork®

STOLL-artwork® - the knitting
support in Adobe® Photoshop®
for better communication between
designers and technicians which
enables an optimized pattern
development process.



STOLL



Stoll's pattern software
for the efficient creation of
knitting programs

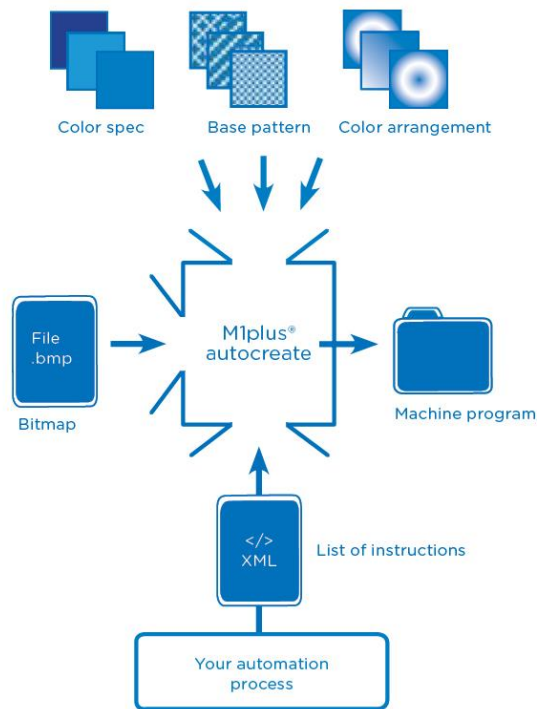




STOLL-autocreate®

Fully automated pattern generation process, without any interactive intervention. It carries out the individual necessary steps according to a defined list of instructions, to create a knitwear pattern.

STOLL

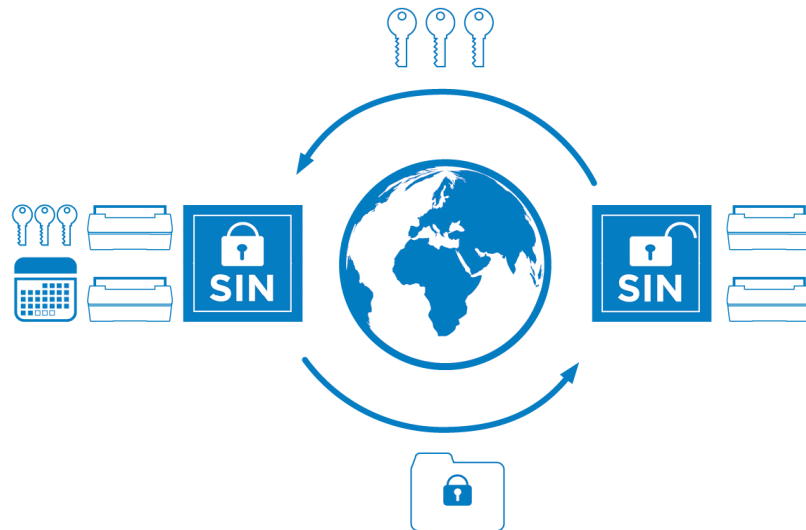




Sintral Crypto Tool

**Feel free with more sin
security**

Protection of intellectual
property.



knitelligence® machine generation

STOLL





knitelligence[®] machine generation brings

- connectivity
- knitrobotic[®]
- efficient operations
- special features

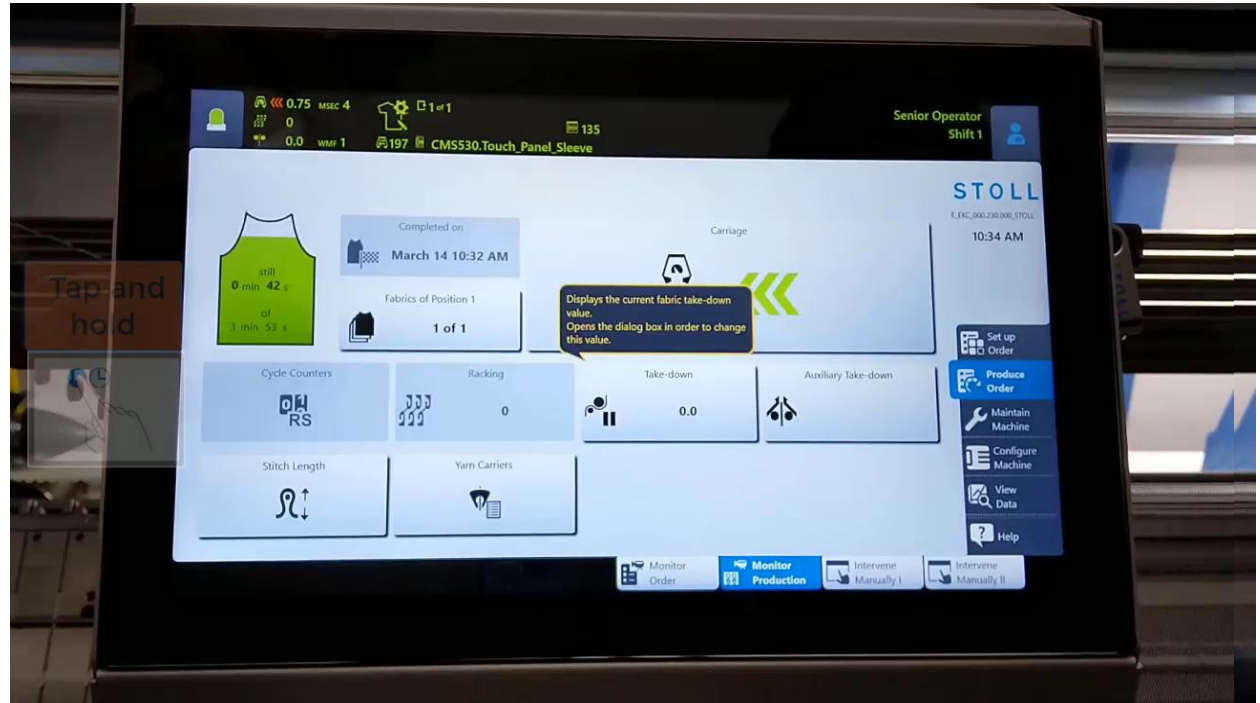
see it for your self...

Multi-Touch Panel

With...

- improved legibility
- capacitive touch
- faster display reaction
- new gestures

Available on all
knitelligent machines





Production Planning System

Central production planning and machine management system to control, monitoring, plan and optimize your production





Production Planning System

EXTENDED KNIT REPORT
available on all knitelligent
machines



Efficiency Report

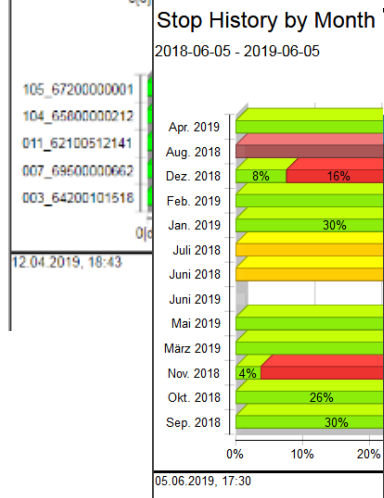
Showing page 1 of 1

Efficiency Report by Machine **STOLL**

Stop History

Overall Efficiency

Showing page 1 of 1

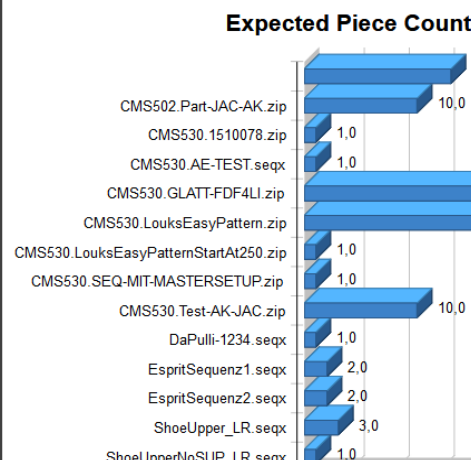


Expected Piece Count Report

Showing page 1 of 1

Expected Piece Count Report

2019-06-05 - 2019-06-12

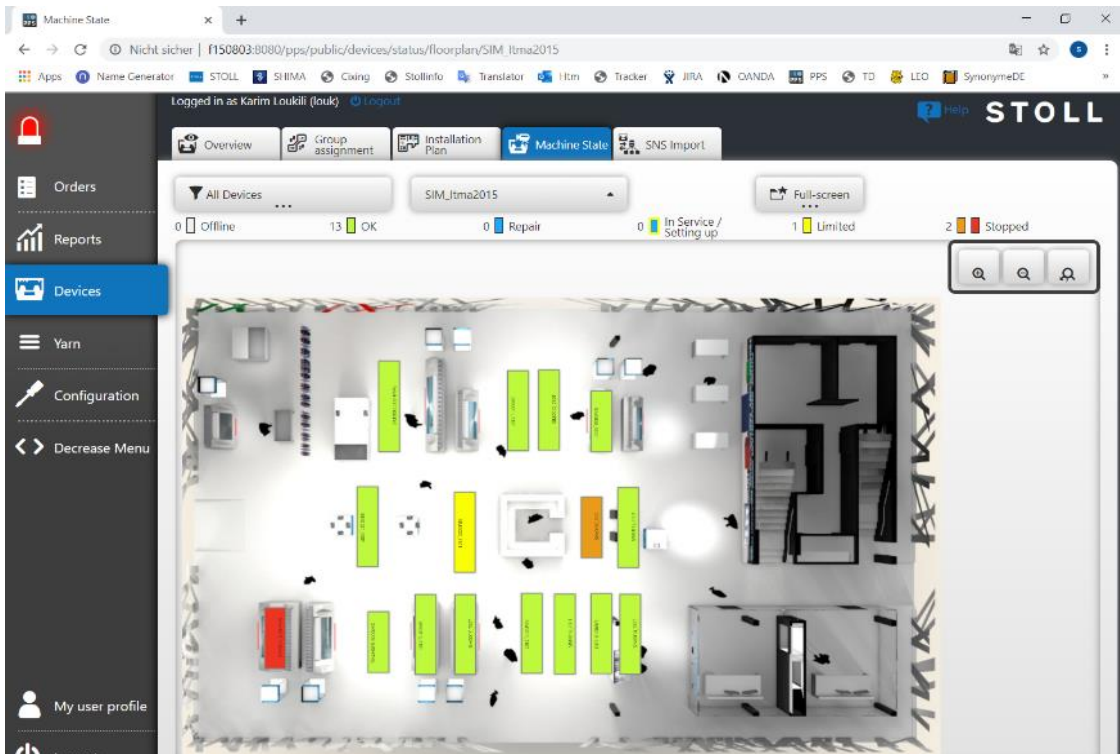




Production Planning System

EXTENDED KNIT REPORT
available on all knitelligent
machines

STOLL



ADF knit & wear

World's first flat knitting machine for seamless production that features:

- Inverse Plating
- Stoll-ikat plating
- Selective Plating
- Intarsia Plating
- Stoll Weave-in[®]
- Intarsia



... front and rear in one machine

The unique world of ADF knit & wear

STOLL



Pattern
and color
variety

Weft optics
with **STOLL-
weave-in®**

Combine all
in the same
pattern

Fully
fashion and
knit & wear
Using the same
machine

1 yarn
carrier for
everything

Intarsia
Plating

**STOLL-
ikat
plating®**

Inverse
Plating

More than 2
yarn carriers
in the same
plating field

Autarkic
yarn
carriers

Even
more
flexibility

Reduced
setup
times

Selective
Plating

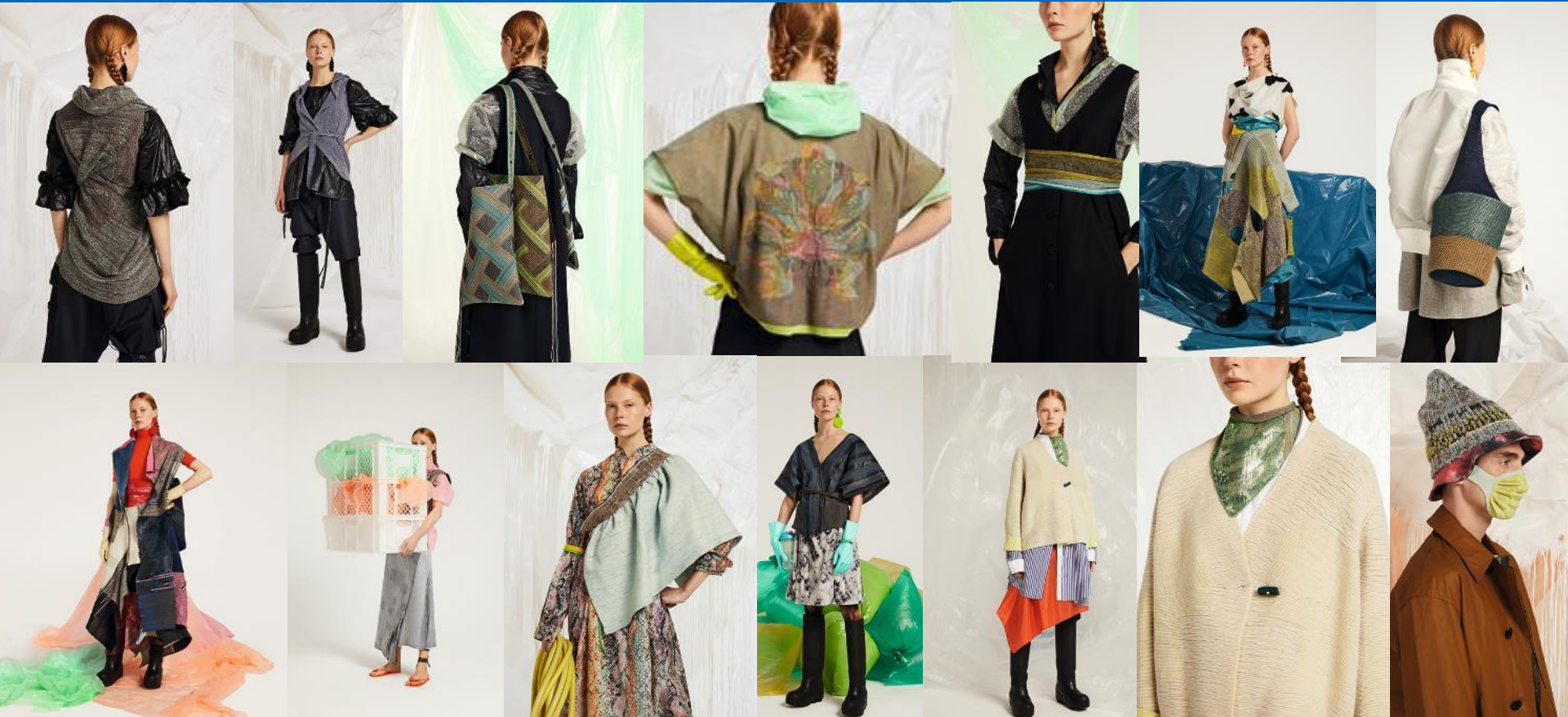
All
techniques
on both
front and
rear needle
bed

Fast
reliable
Intarsia

High
productive
knit & wear
patterns

MATERIALIZATION

STOLL



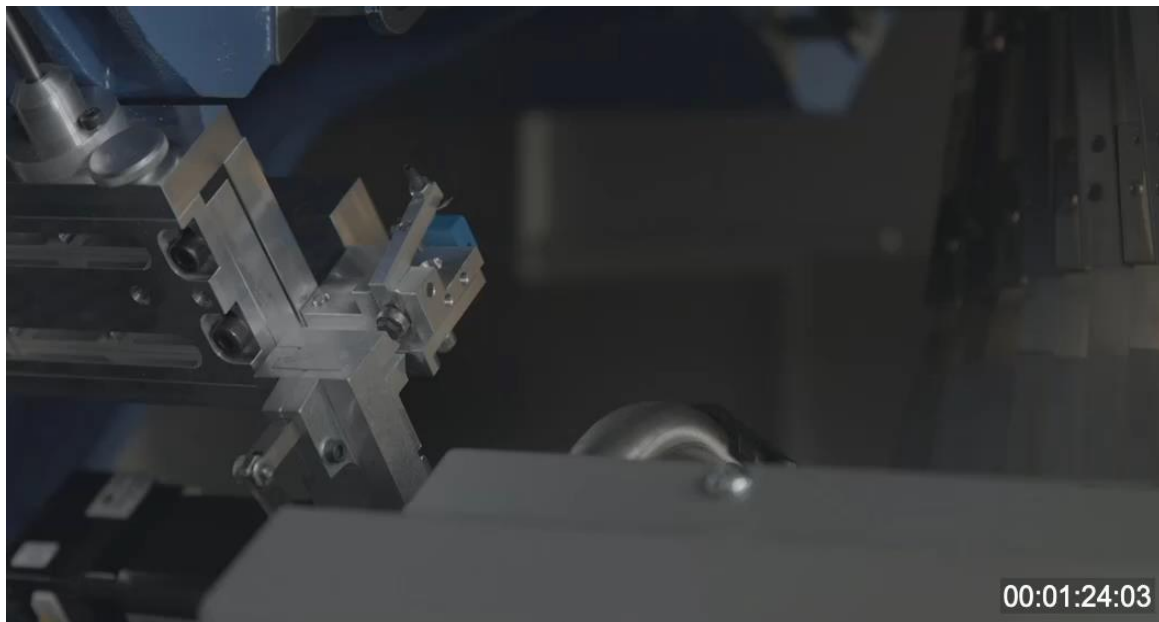


STOLL-knitrobotic®

FOR MORE AUTOMATION

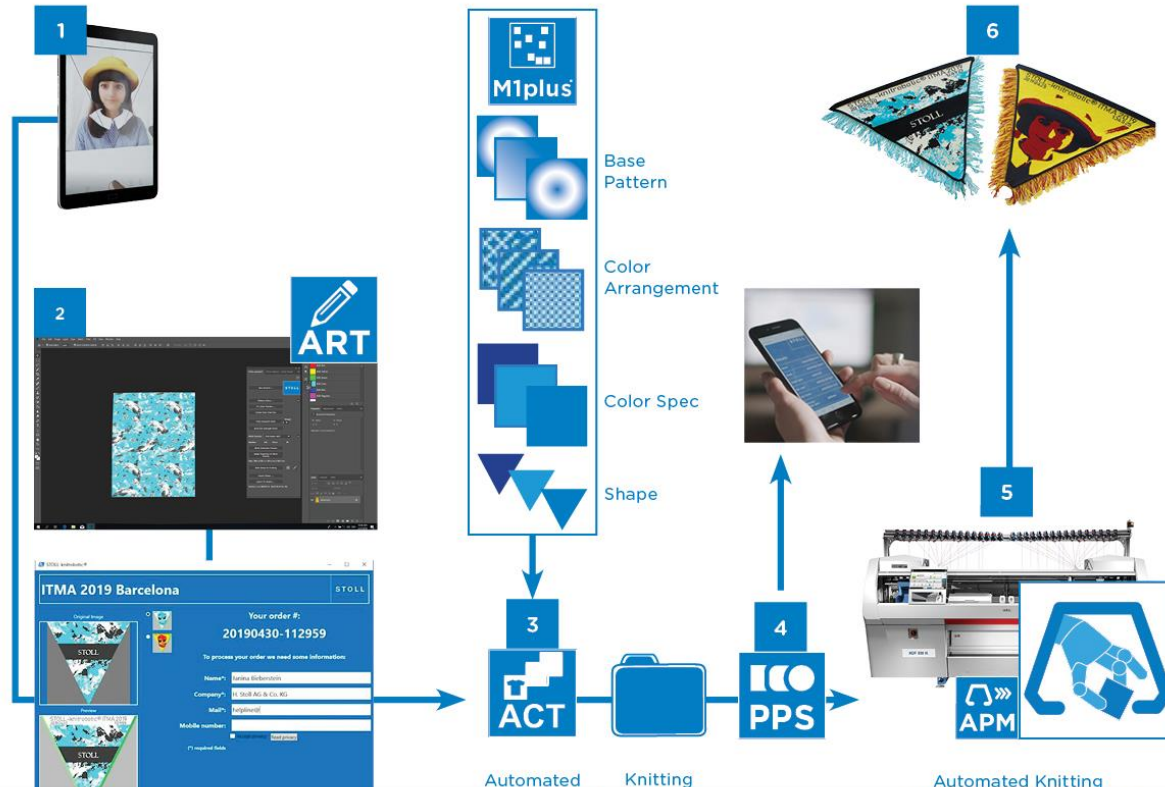
Automatic insertion of materials
during or after the knitting process

without manual intervention



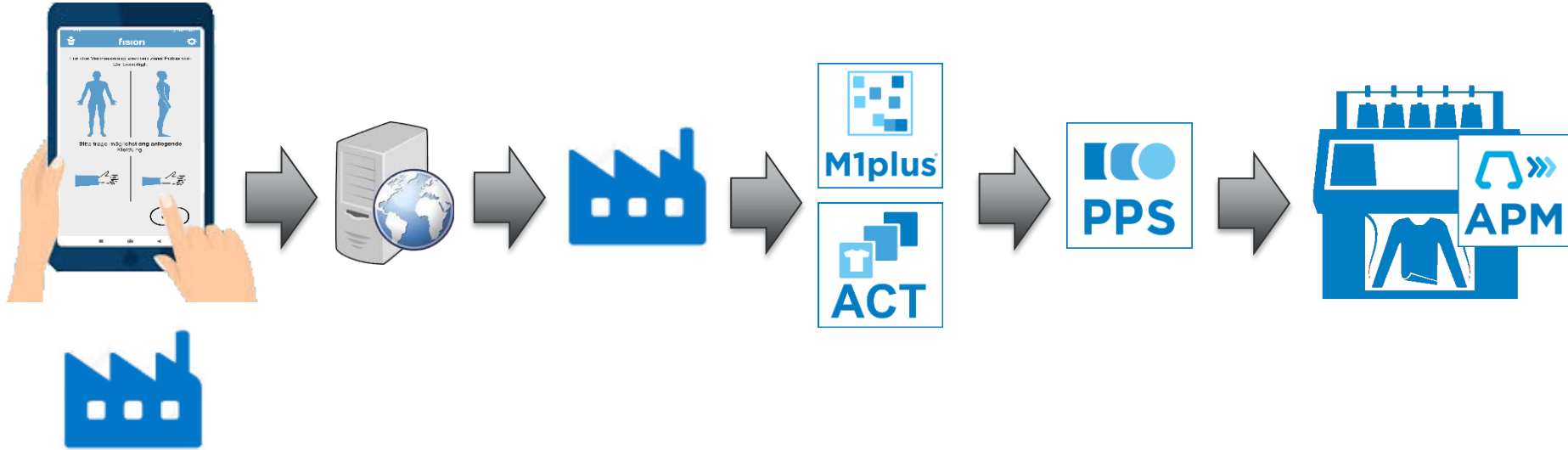


Integration of STOLL-knitrobotic® on knitelligence® for more AUTOMATION saving labor costs



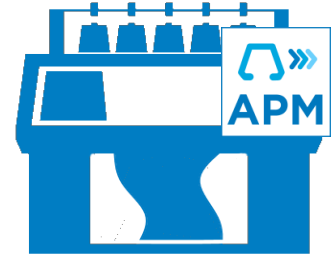
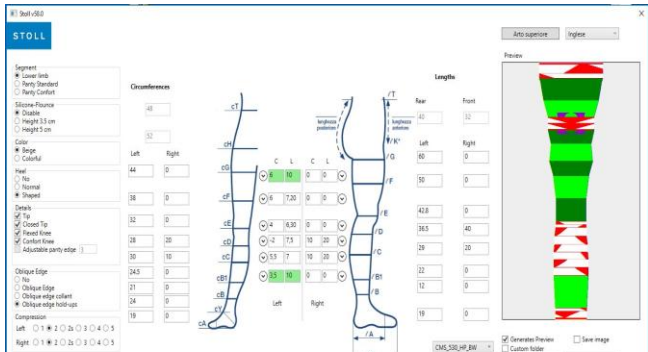
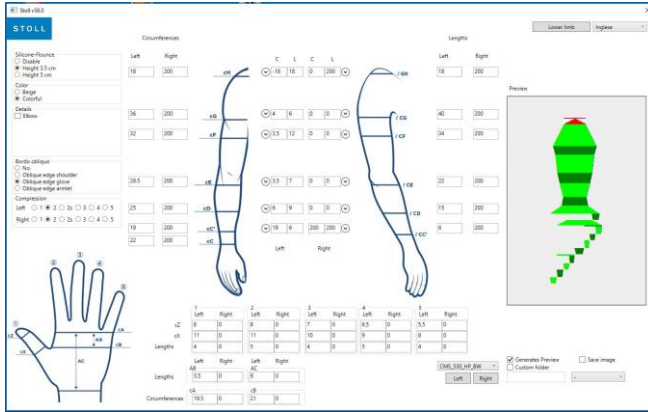
Integration of BODY-SCAN on knitelligence® for individualized knit & wear knitted clothes

STOLL

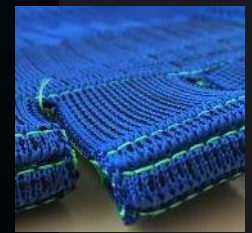
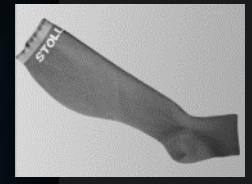
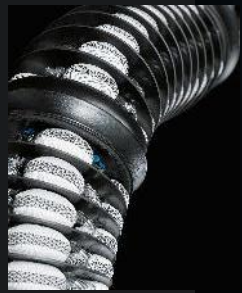


Integration of a Medical front-end on knitelligence® for individualized medical knitted pieces

STOLL



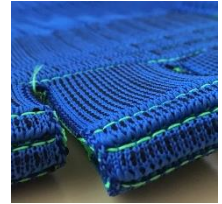
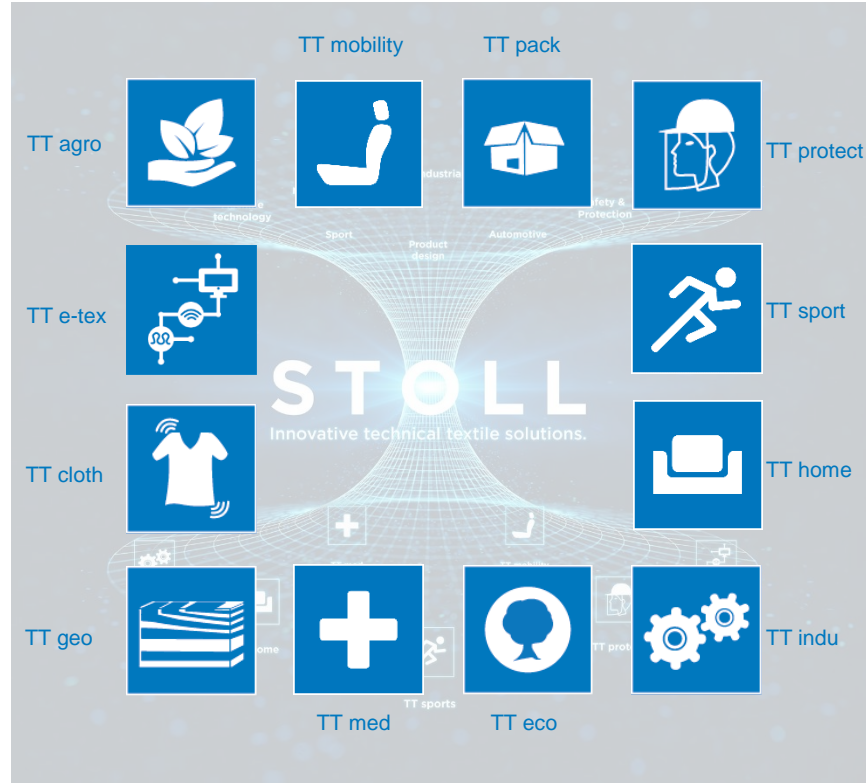
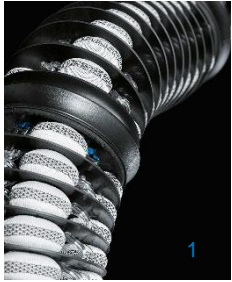
Technical Textile solutions for you...



Variety of Technical Textiles

STOLL

Similar demands of different industries



The knitted sensor glove