

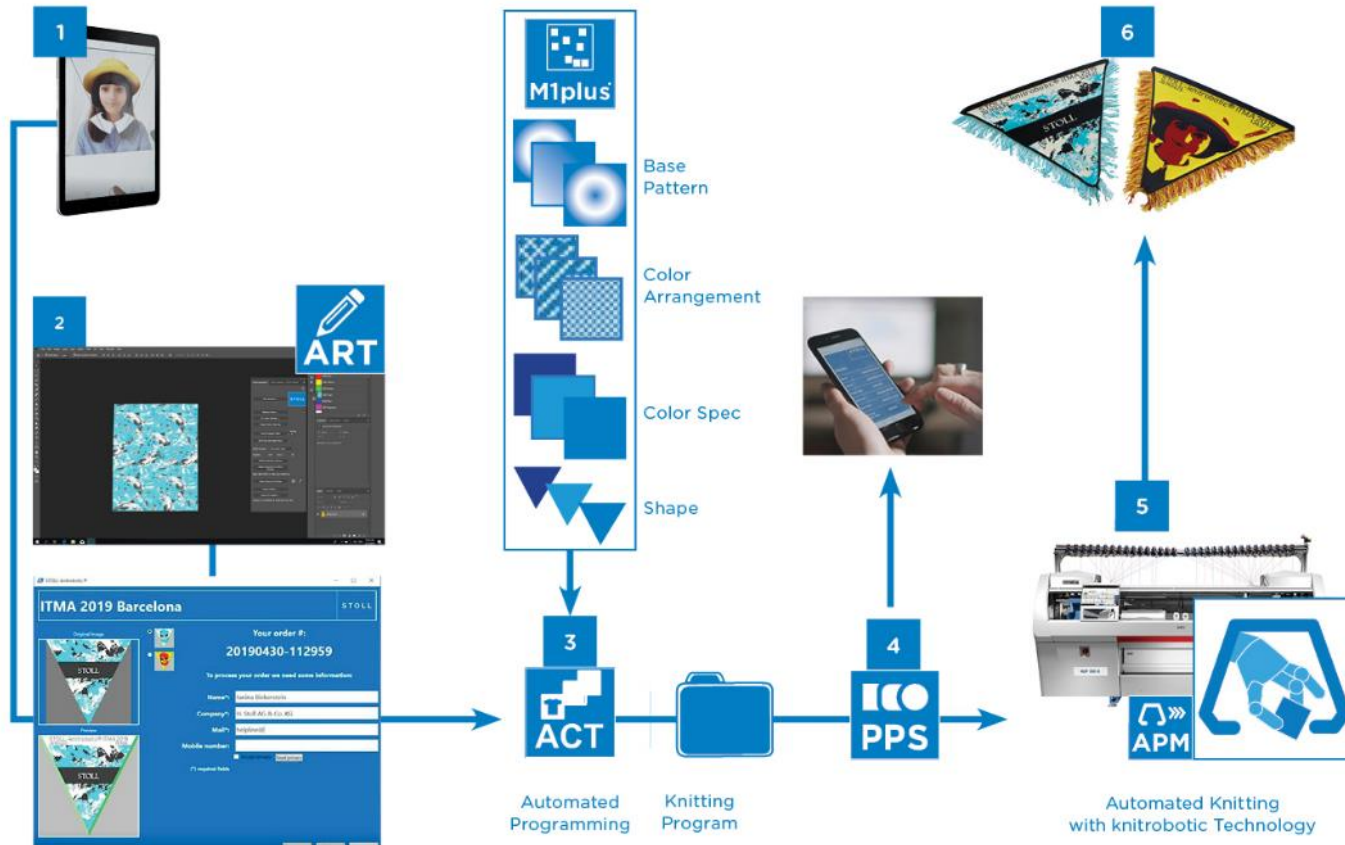


**STOLL-Knitrobotic®**



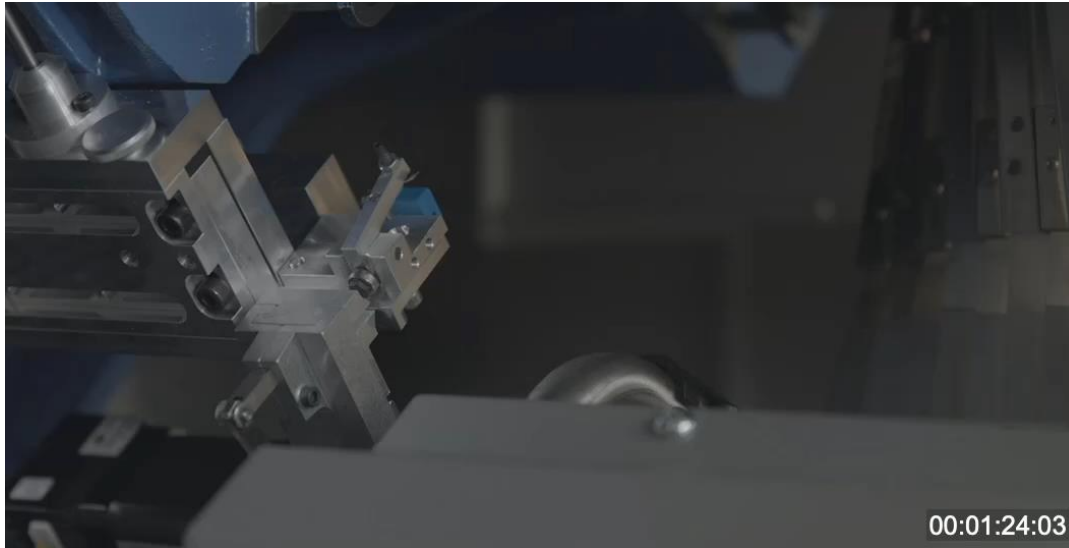


# STOLL-knitrobotic® - showcase workflow





Functional extension of Stoll flat knitting machines with a knitrobotic-kit, that enables a fully automated insertion of pieces and materials during the knitting process to replace manual interventions without interruptions.



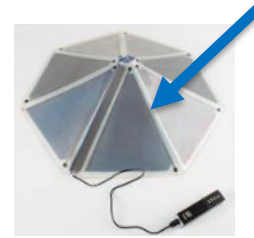


## Inspirations

- fastening elements e. g. in upholstery, shoes...



- parts for increasing the stiffness e.g. In braces, shoes, collars, masks...



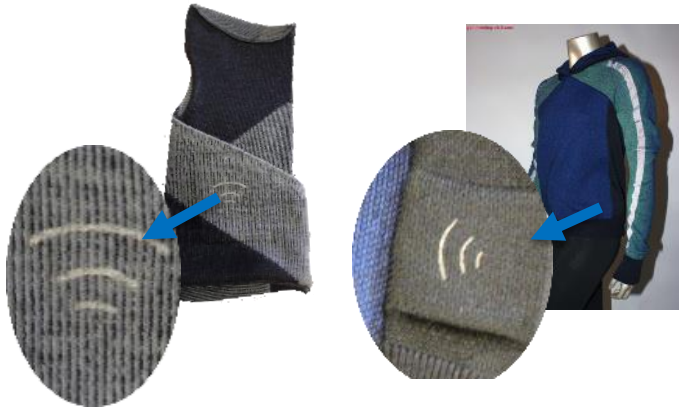
- electric parts e. g. LED, contact pins,...





## Inspirations

- electronic parts e. g. wearables, NFC-chips...



- magnetic parts e. g. locks...





## What other possibilities can you imagine?

### Additional processes after knitting and inserting:

- 3 D forming of the inserted pieces by pressure and/or heating (e. g. plastic or metal parts)
- Changing physical characteristics by pressure and/or heating (e. g. hot fusion/melding)
- etc...

Video: Showcase STOLL-knitrobotic®



**THANK YOU FOR  
YOUR ATTENTION!**